

SCW BEADERS NEWSLETTER

January 2018 – HAPPY NEW YEAR!!!!

Page 1 of 3

Happy New Year to all of my beading buddies. Wishing you the best in health and happiness all year long!! Now on to the good stuff and the better stuff and the best stuff.

Okay for the best stuff first... The Tucson Bus Trip. This year Bobbie worked her little tushie off and we have two, count em two busses going to Tucson. Now there is no excuse for your not going. All of the vendors we so dearly love will be in one place. Once we get to the casino, we can relax and buy our piles and piles of precious gems, beads and tools, etc. There will be plenty of food and drink available, or you can bring your own so as not to have to stop buying for any long length of time. Either way we will be making only one stop. I suggest bringing a rolling cart of some type to store your food and goodies. The cost is \$33.00, this includes round trip transportation and the tip for the driver. The forms are on the Monitor's desk, so if you have been putting it off, sign up before it is too late. This is a great trip.

BLING FLING INFORMATION*****

The Bling Fling procedure has changed a little so pay attention.

When you go to sign up for the Fling, you will also be signing up to have your jewelry go through QC. Once the spaces for the dates and times are filled, you must pick another time. It is your responsibility to show up for the time you signed up for. The QC will be accepting product on the following dates, and only on these dates.

January 8, 10, 15, 17, 22, 24, and 29. That is it. Please see the forms on the Monitor's desk for more information. Remember in order to sell you must work and have all of your product checked and okayed by QC, and be a member in good standing. The Fling is Saturday, February 10, 2018 from 9am – 3pm.

CLASSES:

If you are interested in teaching a class please contact Sherry Gearhart at dsgearhart18@yahoo.com, so she can get you all set up. If there is a particular class you would like to take, let Sherry know so she can arrange for a class and a teacher. Remember the usual rules apply, you must leave a refundable \$5.00 check in the envelope when you sign up. In case you cannot make the class it is your responsibility to contact the

teacher before the class so she can notify the people on the waiting list. We do not know what classes you are interested in taking unless you let us know. At the present time we still cannot read minds.

The Spring Craft Fair is not far behind all of the stuff going on. It is scheduled for March 17th, St. Paddy's Day. More information will be available as time draws near.

Yikes, this is a lot of stuff to process and don't forget our basic hours, etc.

Club hours and rules

Monday 6pm – 9pm

Wednesday 10am – 4pm

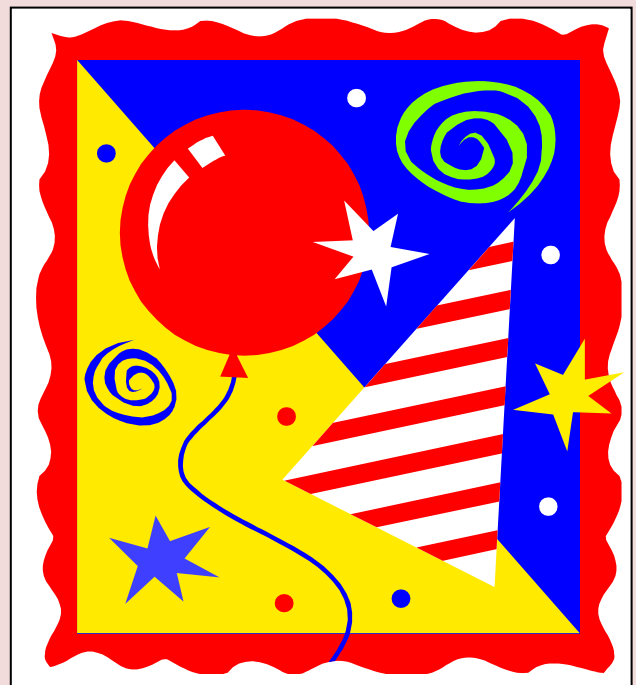
OUR CLUB IS A NON SMOKING, PET AND POLITICAL FREE CLUB. Please be kind to your fellow beaders, by wearing no scents.

CALENDARS FOR 2018

*Note, some items are guesses, based on past experiences.

JANUARY 2018

Mon	Wed	Sat
1- beading	3- beading	
8- beading	10- beading	
15- beading & Bd Mtg	17- beading	
22- beading & *General Meeting	24- beading	
29- beading and last QC	31- TRIP TO TUCSON	



FEBRUARY 2018

Mon	Wed	Sat
5- beading	7- beading	10- Winter Bling Fling 9-3
12- beading & Bd. Mtg.	14- beading	
19-Chili Party beading	21- beading	
26- beading	28- beading	

MARCH 2018

Mon	Wed	Sat
5- beading	7- beading	
12-beading & Bd. Mtg	14-beading	17- Spring Craft Fair
19- beading	21-beading	
26- beading	28-beading	